

Figures of Lecture 6:

The quasi-local approach to black holes: trapping horizons

Éric Gourgoulhon

Laboratoire Univers et Théories (LUTH)
CNRS / Observatoire de Paris / Université Paris Diderot
Paris Sciences et Lettres Research University
92190 Meudon, France

<http://luth.obspm.fr/~luthier/gourgoulhon/>

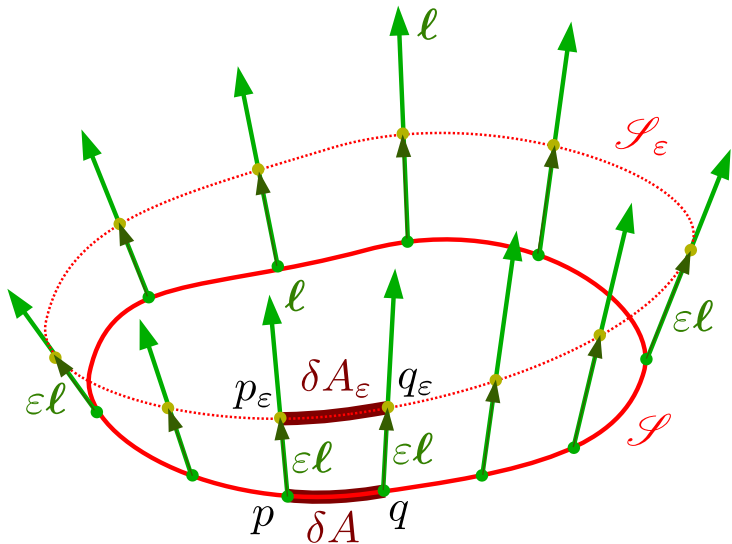
DIAS-TH, JINR, Dubna

19 May 2017

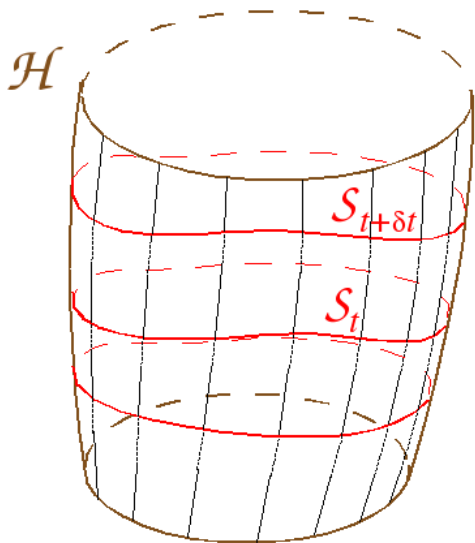
<http://luth.obspm.fr/~luthier/gourgoulhon/bh16/doubna/>

Figures in the [SageMath worksheet](#)

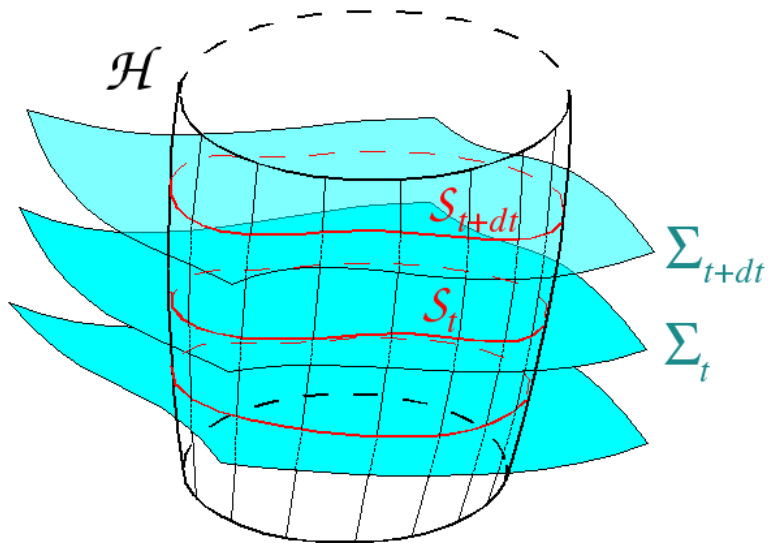
Lie dragging along a null normal



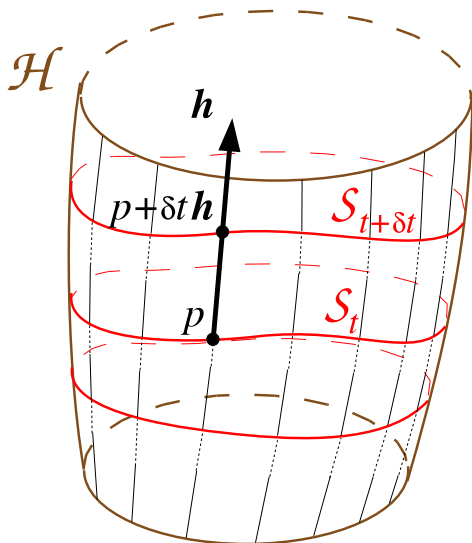
Future-outer trapping horizon (FOTH)



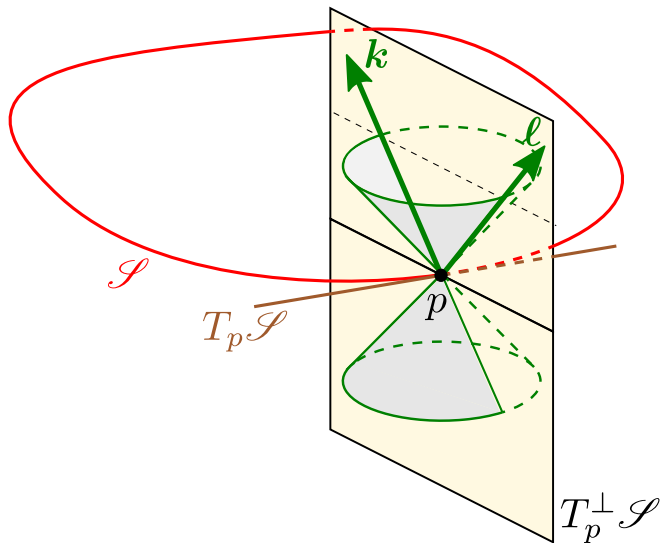
Future-outer trapping horizon (FOTH)



Evolution vector along a FOTH



The 2-plane normal to a spacelike surface



The 2-plane normal to \mathcal{S}_t

